

# View Point

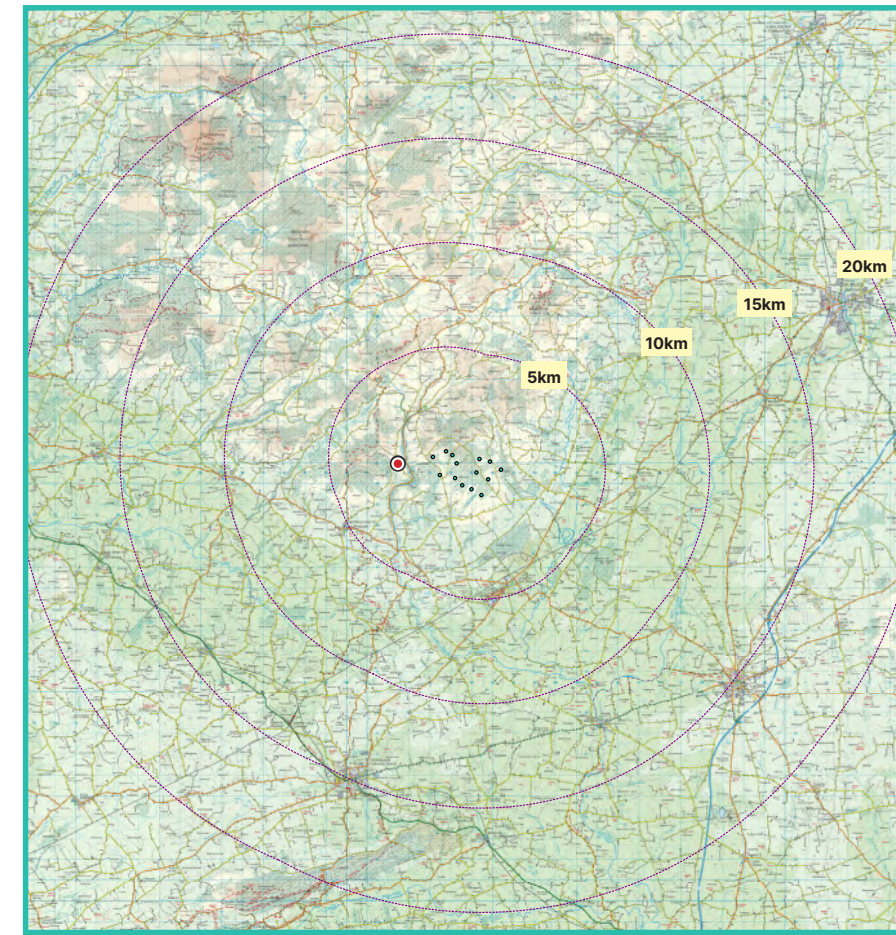
## 06

# Foilaclug above SR-20

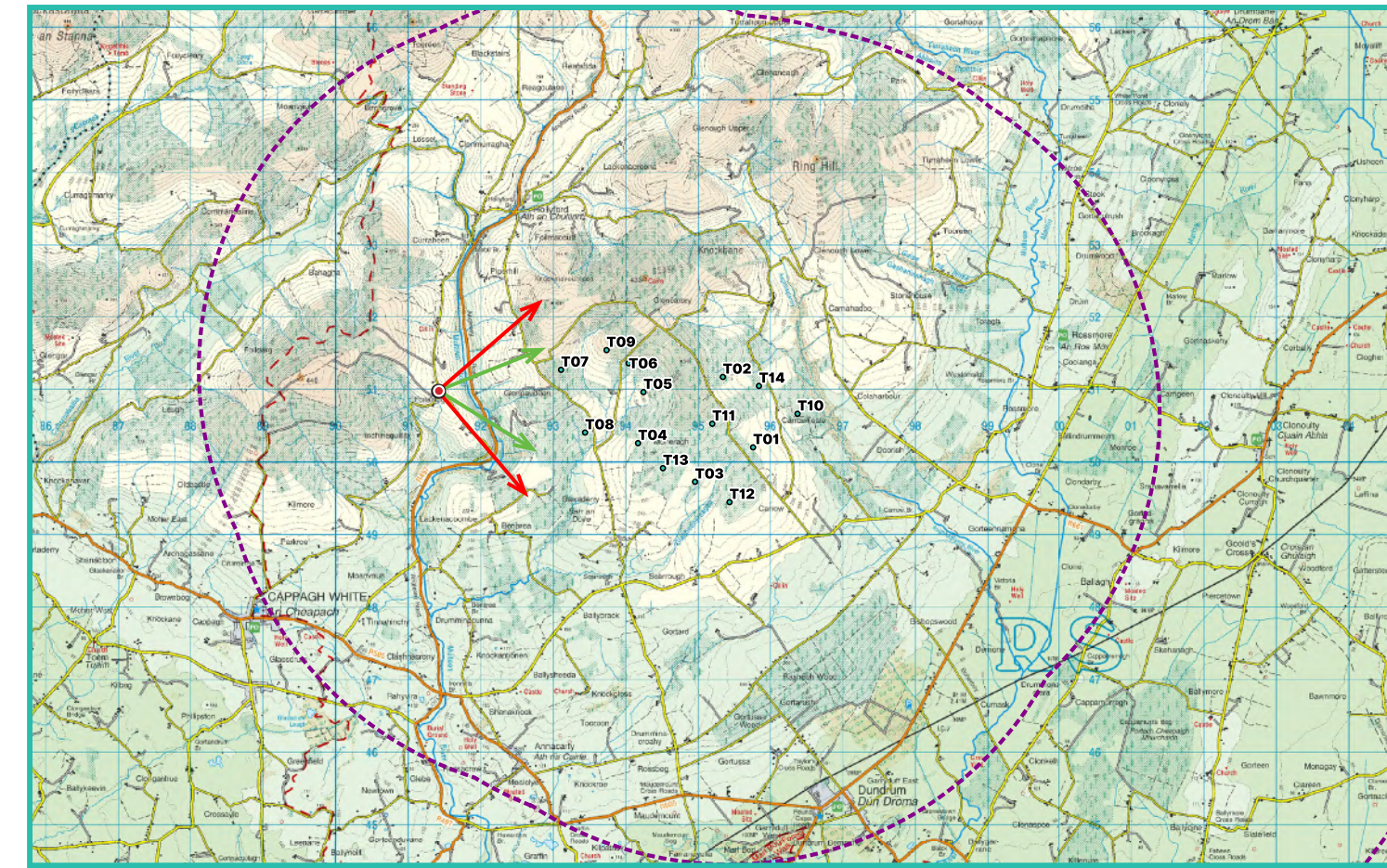
### Photomontage 06

View from the L5108 Local Road in the townland of Foilaclug, situated above Co. Tipperary designated Scenic Route 20. Located approximately 1.7km west of the nearest turbine (T07).

View point grid reference	E 591387 N 651016
Date of image taken	2024-09-11
Time of image taken	15:55
View point elevation	253m
Angle of Views	90° / 53.5°
View Direction (Image Centre)	94°
Number of proposed turbines visible in Photomontage	13/14
Turbine Hub Height	103.5m
Turbine Rotor Diameter	163m
Turbine Tip Height	185m
Montage Type	Type 4 Photomontage / Survey / Scale Verifiable
Camera & Lens	Canon 5D Mark III / Full Frame Sensor with a 50mm Lens
Tripod	Manfrotto 190X extended to approx 1.5m.
Map Licence	© Ordnance Survey Ireland. All rights reserved. Licence number CYAL50267517

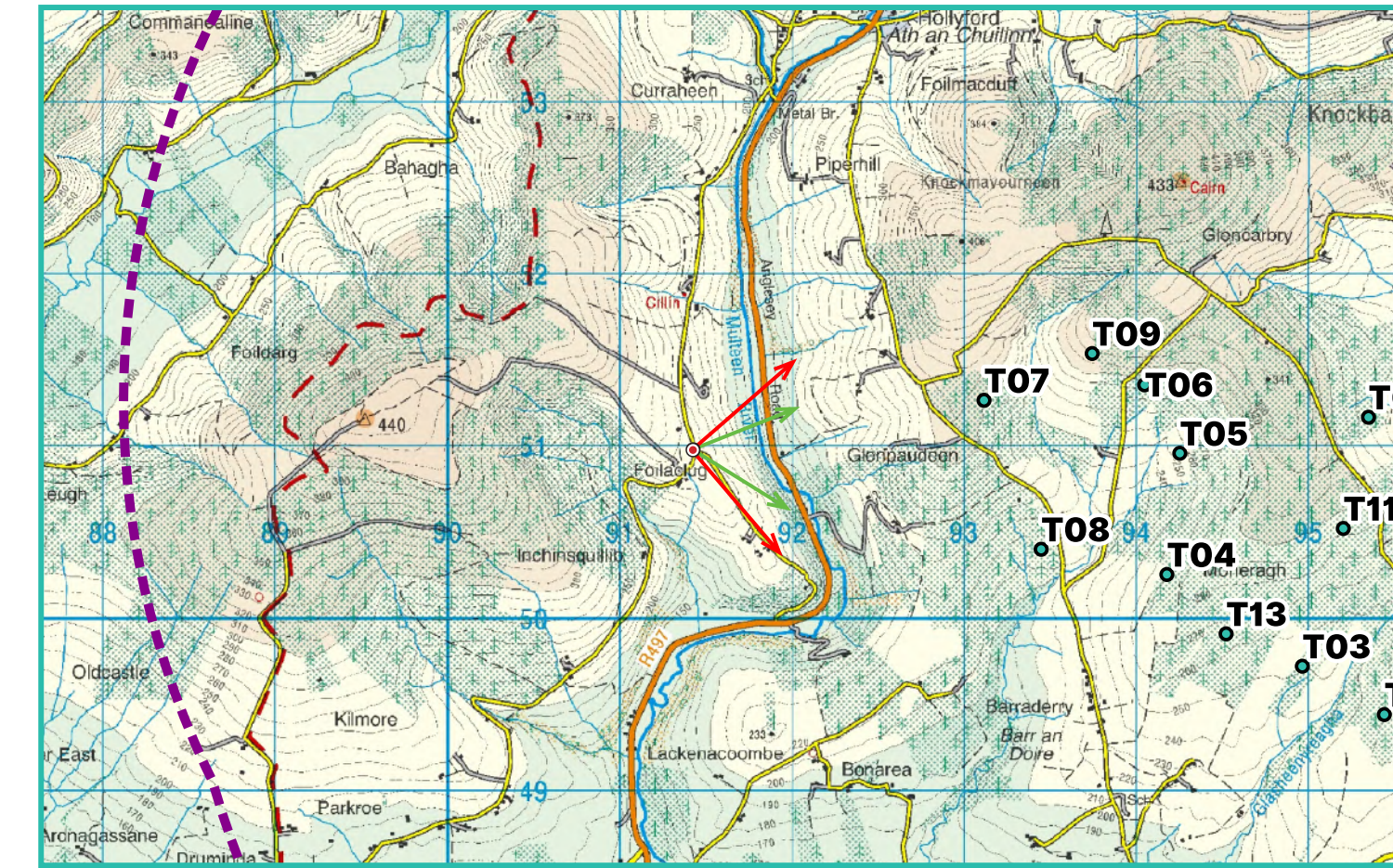


View point relative to 20km radius.



View point relative to proposed wind farm site.

90° View Extent



Detail of view point location.

### Map Legend

Area shown in 90° view

Area shown in 53.5° view

View Point

Proposed Carrow Wind Farm

### Wireline Legend

Proposed Carrow Wind Farm

Proposed Met Mast (103.5m)

Existing Wind Farms

Permitted Wind Farms

Proposed Wind Farms

Prepared by

MKO  
Planning & Environmental Consultants  
Tuam Road, Galway.

Tel: (091) 73 56 11  
E-mail: info@mkofireland.ie  
Website: www.mkofireland.ie



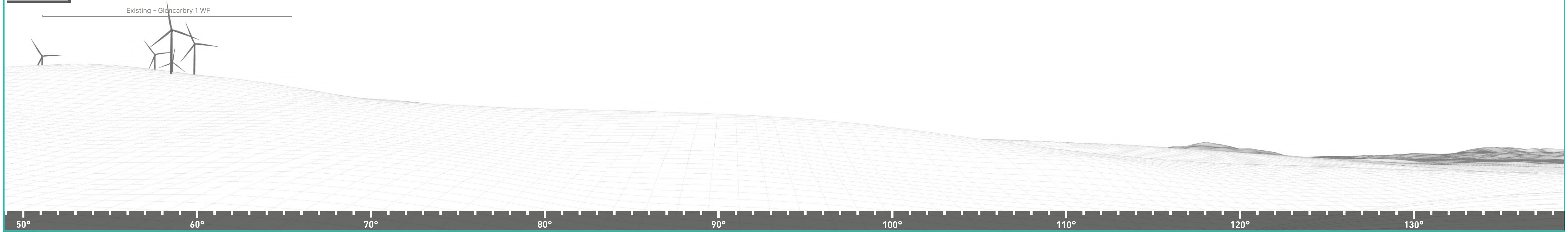
Key Image at 120°

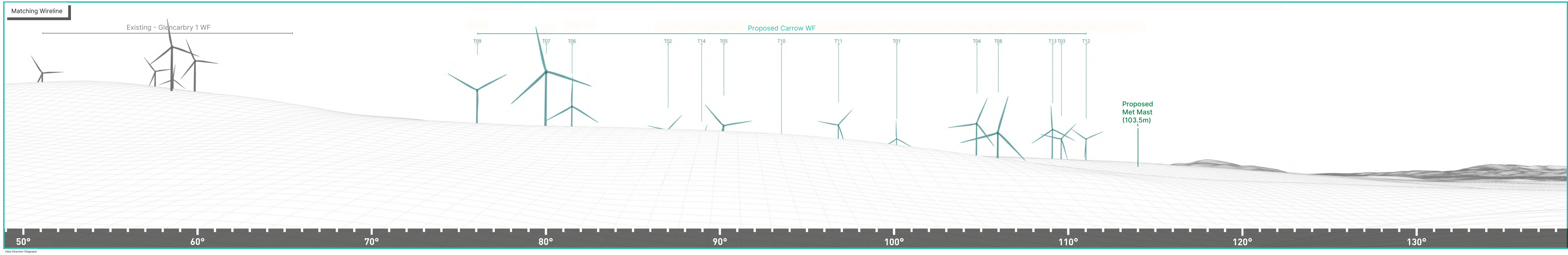


53.5° View Extent



Matching Wireline





Proposed Photomontage with Cumulative at 53.5°



70°

80°

90°

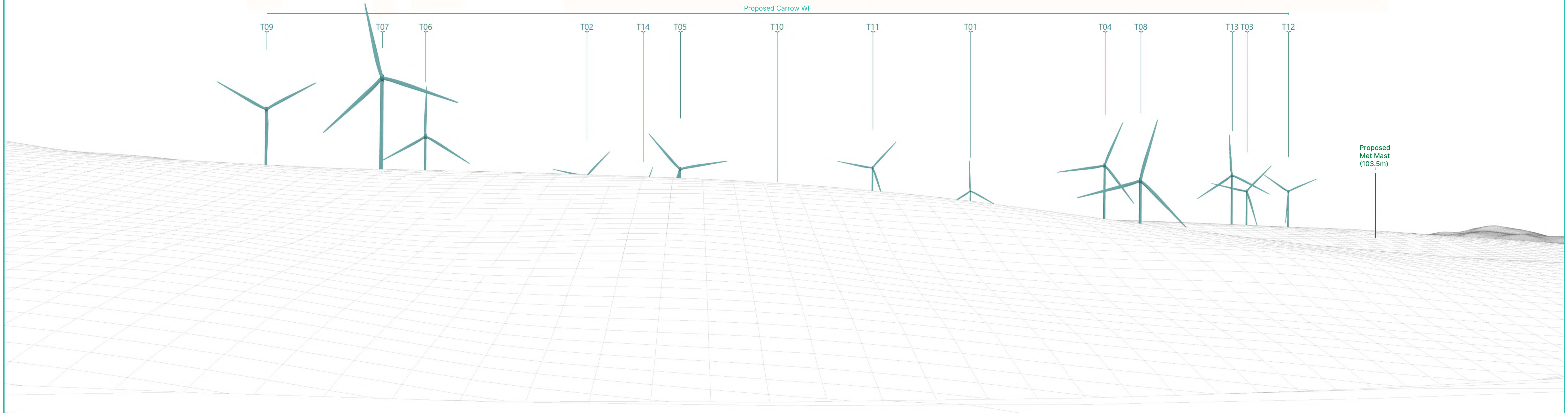
100°

110°

120°

Matching Wireline

Proposed Carrow WF



T09

T07

T06

T02

T14

T05

T10

T11

T01

T04

T08

T13

T03

T12

Proposed Met Mast (103.5m)

70°

80°

90°

100°

110°

120°